



Government of India  
Ministry of Earth Sciences  
India Meteorological Department



Press Release

Date: 05<sup>th</sup> July, 2025

Time of Issue: 1315 hours IST

**Subject:** (i) Heavy to very heavy rainfall activity likely to continue over northwest, central & northeast India during next 6-7 days; over East India till 07<sup>th</sup> July.  
(ii) Extremely heavy rainfall ( $\geq 21$  cm) at isolated places likely over East Madhya Pradesh on 05<sup>th</sup> and Himachal Pradesh on 06<sup>th</sup> July and Ghat areas of Madhya Maharashtra on 06<sup>th</sup> & 07<sup>th</sup> July.

**Realised weather during past 24 hours till 0830 hours IST of today, the 05<sup>th</sup> July, 2025 (Annexure II):**

- ❖ Heavy to very heavy rainfall at some places with isolated extremely heavy rainfall has been recorded at East Madhya Pradesh.
- ❖ Heavy to very heavy rainfall (7-20 cm) has been recorded at isolated places over East Rajasthan, West Uttar Pradesh, West Madhya Pradesh, ghat areas of Madhya Maharashtra, South Interior Karnataka; Heavy rainfall (7-11 cm) at isolated places over Konkan & goa, West Bengal, Punjab, Haryana, Jammu, Arunachal Pradesh, Assam & Meghalaya, Nagaland, Odisha, Jharkhand, Gujarat state, Chhattisgarh, Kerala, Coastal Karnataka.
- ❖ Thunderstorm accompanied with Squally/Gusty winds with speed 40-60 kmph at isolated places over Tamil Nadu, Kerala, Interior Karnataka, Coastal Andhra Pradesh & Yanam, Telangana, Rayalaseema, Madhya Maharashtra, Marathwada, Assam & Meghalaya, West Uttar Pradesh, Madhya Pradesh, Andaman & Nicobar Islands, Odisha, Konkan, Bihar, Himachal Pradesh, Saurashtra & Kutch.

For more details of realised weather, kindly refer [Annexure I](#),

**i. Weather Systems, Forecast and Warnings (refer to Annexure II & III):**

- ❖ Monsoon trough at mean sea level runs near normal of its position.
- ❖ A cyclonic circulation lies over Northeast Madhya Pradesh in lower tropospheric levels.
- ❖ An upper air cyclonic circulation lies over northern parts of Gangetic West Bengal & neighbourhood and extends upto middle tropospheric levels tilting southwest wards with height. Under its influence; a Low-Pressure area is likely to form over Gangetic West Bengal & neighbourhood during next 24 hours.
- ❖ A trough runs from northeast Arabian Sea to the above cyclonic circulation over northern parts of Gangetic West Bengal & neighbourhood in lower & middle tropospheric levels tilting southward with height.
- ❖ A cyclonic circulation lies over northeast Assam in lower tropospheric levels.
- ❖ The off-shore trough now runs from south Gujarat to Karnataka coasts at mean sea level.

Under the influence of these systems, the following weather is likely:

**East & Central India:**

- ✓ Isolated heavy to very heavy rainfall very likely to continue over Madhya Pradesh during 05<sup>th</sup>-11<sup>th</sup> July with **Extremely heavy rainfall ( $\geq 21$  cm)** at isolated places over East Madhya Pradesh on 05<sup>th</sup> July.
- ✓ Isolated heavy rainfall over Jharkhand, Gangetic West Bengal, Odisha, Vidarbha, Chhattisgarh during 05<sup>th</sup>-08<sup>th</sup>; Sub-Himalayan West Bengal & Sikkim on 05<sup>th</sup> and during 08<sup>th</sup>-10<sup>th</sup>; Andaman & Nicobar Islands on 06<sup>th</sup> July with **very heavy rainfall** over Chhattisgarh during 05<sup>th</sup>-07<sup>th</sup>; Vidarbha on 07<sup>th</sup> & 08<sup>th</sup>; Gangetic West Bengal, Jharkhand, Odisha on 05<sup>th</sup> & 06<sup>th</sup> July.
- ✓ Light/moderate rainfall at most/many places accompanied with thunderstorm, lightning & gusty winds speed reaching 30-40 kmph likely over the region during next 7 days.

**Northwest India:**

- ✓ **Extremely heavy rainfall ( $\geq 21$  cm)** very likely at isolated places over Himachal Pradesh on 06<sup>th</sup> July.
- ✓ Isolated heavy rainfall likely over Uttarakhand, East Rajasthan during 05<sup>th</sup>-11<sup>th</sup> July; East Uttar Pradesh, West Rajasthan on 05<sup>th</sup>, 06<sup>th</sup>, 10<sup>th</sup> & 11<sup>th</sup>; Haryana, Chandigarh, Punjab, Uttar Pradesh during 05<sup>th</sup>-10<sup>th</sup>; Jammu & Kashmir, Himachal Pradesh during 05<sup>th</sup>-09<sup>th</sup> July with **very heavy rainfall over Himachal Pradesh on 07<sup>th</sup> & 08<sup>th</sup>; Uttarakhand during 05<sup>th</sup>-07<sup>th</sup>; Punjab, Haryana on 06<sup>th</sup> & 07<sup>th</sup>; East Rajasthan on 05<sup>th</sup>, 09<sup>th</sup> & 10<sup>th</sup> July.**

- ✓ Light/moderate rainfall at most/many places accompanied with thunderstorm, lightning likely over western Himalayan region and some/many places over the plains during next 7 days.

#### **West India:**

- ✓ **Extremely heavy rainfall ( $\geq 21$  cm)** very likely at isolated places over Ghat areas of Madhya Maharashtra on 06<sup>th</sup> & 07<sup>th</sup> July.
- ✓ **Heavy to very heavy rainfall** likely at isolated places over Konkan & Goa, Ghat areas of Madhya Maharashtra, Gujarat region during next 7 days; Saurashtra & Kutch during 05<sup>th</sup>-07<sup>th</sup> and **heavy rainfall** over Marathawada on 06<sup>th</sup> & 07<sup>th</sup> July.
- ✓ Light/moderate rainfall at most/many places accompanied with **thunderstorm, lightning & gusty winds speed reaching 30-40 kmph** likely over the region during next 7 days.

#### **Northeast India:**

- ✓ Light/moderate rainfall at most places accompanied with **thunderstorm, lightning and isolated heavy rainfall** likely to continue over Northeast India during next 7 days with very heavy rainfall over Meghalaya 05<sup>th</sup> July.

#### **South Peninsular India:**

- ✓ Isolated **heavy rainfall** likely over Tamil Nadu on 05<sup>th</sup>; Kerala & Mahe on 05<sup>th</sup>, 06<sup>th</sup> and during 09<sup>th</sup>-11<sup>th</sup>; Interior Karnataka on 05<sup>th</sup> & 06<sup>th</sup> July, Coastal Karnataka on 05<sup>th</sup>, 06<sup>th</sup>, 10<sup>th</sup> & 11<sup>th</sup> July.
- ✓ **Strong surface winds** (speed reaching 40-50 kmph) very likely over South Peninsular India during next 5 days.
- ✓ Light/moderate rainfall at many/some places over Kerala & Mahe, Lakshadweep, Karnataka, Telangana; isolated to scattered rainfall accompanied with isolated **thunderstorm, lightning** over Coastal Andhra Pradesh & Yanam, Tamil Nadu, Puducherry & Karaikal and Rayalaseema during next 7 days.

#### **Fishermen Warnings:**

**Fishermen are advised to avoid venturing into the following from 05<sup>th</sup> July to 10<sup>th</sup> July 2025 to the following Areas:**

##### **Arabian Sea:**

Along and off Gujarat, Konkan, Goa coasts and adjoining sea areas; Along and off the Somalia coast and adjoining sea areas, Oman and adjoining Yemen coast & over central & adjoining north, south Arabian Sea during day 1 to day 5 (05<sup>th</sup> to 10<sup>th</sup> July); along and off north Karnataka coast and adjoining sea areas for day 2 to day 5 (06<sup>th</sup> to 10<sup>th</sup> July).

##### **Bay of Bengal:**

Along and off north Andhra Pradesh coast for day 1 & day 5 (05<sup>th</sup> & 09<sup>th</sup> July); off Tamil Nadu and Andhra Pradesh coasts; southwest Bay of Bengal for day 1 & day 2 (05<sup>th</sup> & 06<sup>th</sup> July); many parts of westcentral Bay of Bengal for day 1 (05<sup>th</sup> July), most parts of westcentral Bay of Bengal and adjoining parts of northwest, eastcentral Bay of Bengal for day 2 (6<sup>th</sup> July), some parts of westcentral Bay of Bengal for day 3 to day 5 (07<sup>th</sup> to 10<sup>th</sup> July); over Gulf of Mannar for day 2 (06<sup>th</sup> July).

Total suspension of fishing operations is suggested over above mentioned areas and dates.

#### **ii. Weather conditions and forecast over Delhi/NCR during 05<sup>th</sup> to 08<sup>th</sup> July, 2025 (Annexure IV)**

**For more details, kindly refer National Weather Bulletin:**

[https://mausam.imd.gov.in/responsive/all\\_india\\_forecast\\_bulletin.php](https://mausam.imd.gov.in/responsive/all_india_forecast_bulletin.php)

**For District wise warnings refer:** <https://mausam.imd.gov.in/responsive/districtWiseWarningGIS.php>

**Rainfall recorded (in cm) during past 24 hours till 0830 hours IST of today, the 05<sup>th</sup> July:**

- ❖ **East Madhya Pradesh:** Rithi (dist Katni) 23; Niwas (dist Mandla) 19; Bijadandi (dist Mandla) 18; Amanganj (dist Panna) 17; Narayanganj (dist Mandla), Umariyapan (dist Katni) 16 Each; Kumdam (dist Jabalpur) 15; Nowrozabad (dist Umaria) 14; Chandia (dist Umaria), Bijawar (dist Chhatarpur), Bilaspur (dist Umaria) 13 Each; Dindori-aws (dist Dindori), Raipura (dist Panna) 12 Each; Jabalpur-aws (dist Jabalpur), Deori (dist Sagar), Jabera (dist Damoh), Shahpura (dist Dindori), Shahnagar (dist Panna), Niwari (dist Niwari), Dheemarkheda (dist Katni), Panagar (dist Jabalpur) 11 Each; Gonour (dist Panna), Mohgaon (dist Mandla), Channodi (dist Shahdol) 10 Each; Damoh-aws (dist Damoh), Pali (dist Umaria), Palera (dist Tikamgarh), Mehadwani (dist Dindori) 9 Each; Chahtarpur-aws (dist Chhatarpur), Narsinghpur-aws (dist Narsinghpur), Umaria-aws (dist Umaria), Jaithari (dist Anuppur), Sihora (dist Jabalpur), Kesli (dist Sagar), Chhapara (dist Seoni), Sleemanabad (dist Katni), Simariya (dist Panna) 8 Each; Patera (dist Damoh), Bajag (dist Dindori), Pawai (dist Panna), Budhar (dist Shahdol), Bahoriband (dist Katni), Bargi (dist Jabalpur), Karkeli (dist Umaria), Ranjhi (dist Jabalpur) 7 Each;
- ❖ **West Madhya Pradesh:** Sheopur-aws (dist Sheopur) 17; Bhitwarwar (dist Gwalior) 14; Badoda (dist Sheopur) 12; Gairatgang (dist Raisen), Narwar (dist Shivpuri) 10 Each; Chinor (dist Gwalior) 9; Salwani (dist Raisen), Karera (dist Shivpuri) 8 Each; Chanderi (dist Ashoknagar), Shivpuri (dist Shivpuri) 7 Each;
- ❖ **East Rajasthan:** Indergarh SR (dist Bundi) 14; Bari (dist Dholpur) 7;
- ❖ **South Interior Karnataka:** Bhagamandala (dist Kodagu) 13; Kottigehara (dist Chikkamagaluru) 9; Kammardi (dist Chikkamagaluru) 8;
- ❖ **West Uttar Pradesh:** Mahroni (dist Lalitpur) 12;
- ❖ **Coastal Karnataka:** Castle Rock (dist Uttara Kannada) 12; Kundapur (dist Udupi) 10; Siddapura (dist Udupi), Siddapur (dist Uttara Kannada), Gersoppa (dist Uttara Kannada), Kota (dist Udupi) 9 Each; Mudubidre (dist Dakshina Kannada), Mulki (dist Dakshina Kannada) 7 Each;
- ❖ **Madhya Maharashtra:** Radhanagari (dist Kolhapur), Gaganbawada (dist Kolhapur) 10 Each; Lonavala ARG (dist Pune) 9; Shahuwadi (dist Kolhapur) 7;
- ❖ **Gangetic West Bengal:** Basirhat(pt) (dist North 24 Parganas) 10; Kansabati Dam (dist Bankura), Labpur (dist Birbhum), Mangalkote (dist Purba Bardhaman) 8 Each;
- ❖ **Sub Himalayan West Bengal & Sikkim:** Chel (dist Jalpaiguri) 10; Ghish (dist Jalpaiguri), Washabari Tea Estate (dist Jalpaiguri) 9 Each; Neora (dist Jalpaiguri) 8; Bhutanghat (dist Alipurduar) 7;
- ❖ **Gujarat Region:** Palsana (dist Surat) 10; Kankrej (dist Banaskantha) 9; Vapi (dist Valsad), Valsad (dist Valsad) 7 Each;
- ❖ **Konkan & Goa:** Matheran (dist Raigad), Rajapur (dist Ratnagiri), Lanja (dist Ratnagiri) 9 Each; Sawantwadi (dist Sindhudurg) 8; Murbad (dist Thane), Ponda (dist North Goa), Kankavli (dist Sindhudurg), Savarde-arg (dist Ratnagiri) 7 Each;
- ❖ **Saurashtra:** Porbandar (dist Porbandar), Lakhtar (dist Surendranagar), Kalyanpur (dist Devbhoomi Dwarka) 9 Each; Okha (dist Devbhoomi Dwarka) 8; Gadhda (dist Botad), Sayla (dist Surendranagar) 7 Each;
- ❖ **Haryana** Rohtak (dist Rohtak) 9; Rohtak AWS (dist Rohtak) 7;
- ❖ **Chhattisgarh:** Karpawand (dist Bastar) 9; Patna (dist Koriya) 8;
- ❖ **Jammu:** Bakore ARG (dist Jammu) 8;
- ❖ **Assam & Meghalaya:** Chandrapur ARG (dist Kamrup (rural)) 8; Mawsynram (dist East Khasi Hills) 7;
- ❖ **Kerala:** Panathur AWS (dist Kasargod) 7;
- ❖ **Punjab:** Madhopur (dist Pathankot) 7;
- ❖ **East Uttar Pradesh:** Chopan Fmo (dist Sonbhadra) 7;
- ❖ **Odisha:** Pattamundai (dist Kendrapara), Tihidi (dist Bhadrak) 7 Each.

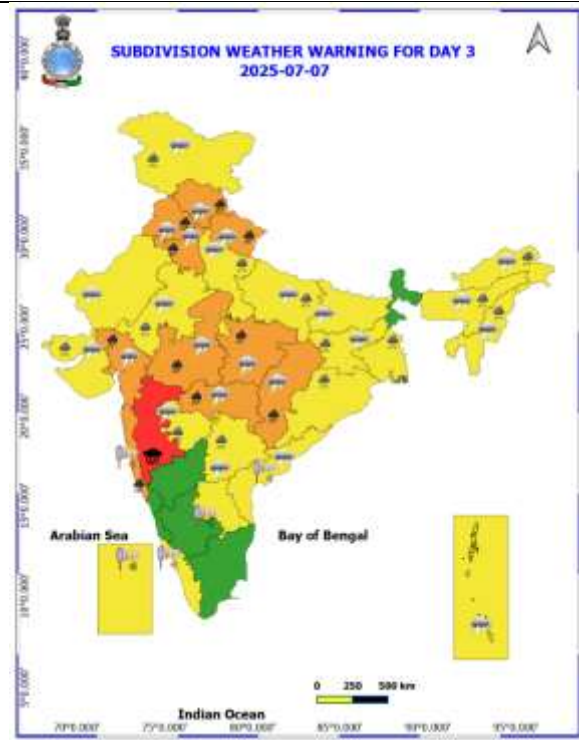
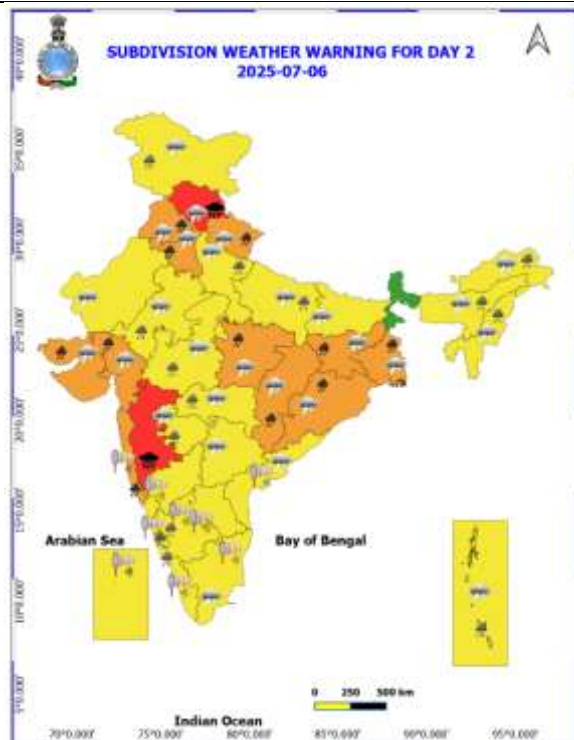
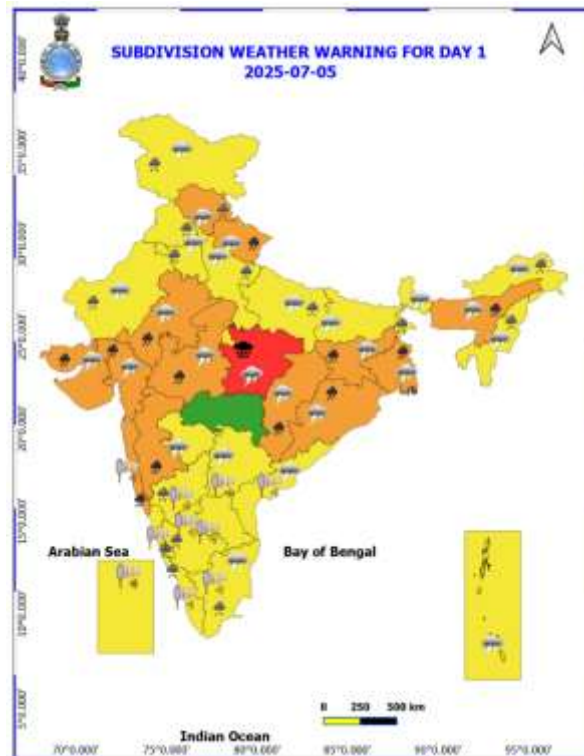
**Realised Gusty Winds (kmph) During Past 24hours ending at 0830 hrs IST of today the 05<sup>th</sup> July:**

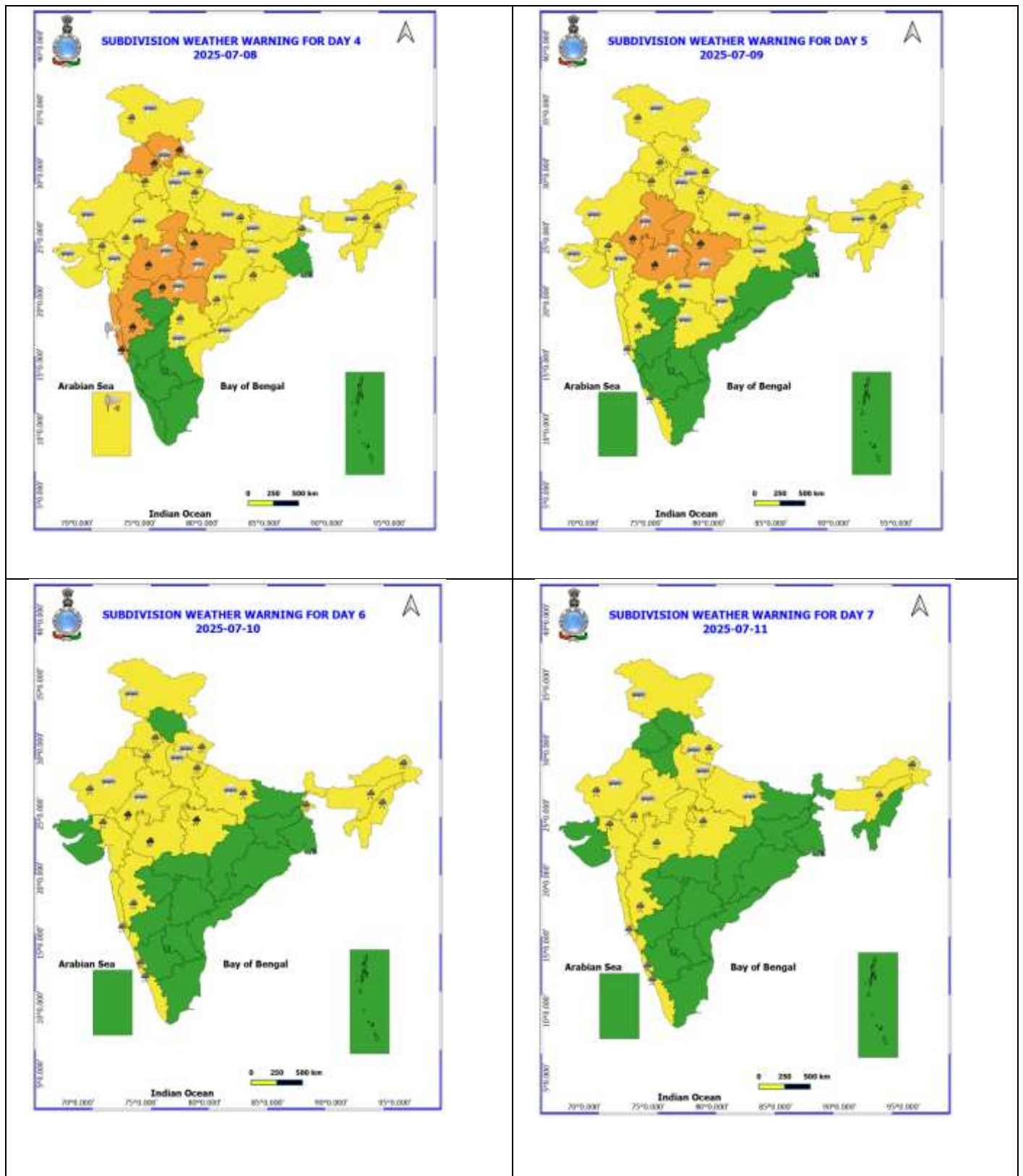
- ❖ **Tamil Nadu:** Tenkasi 59, Veda sandur 57;
- ❖ **Madhya Maharashtra:** Mahabaleshwar (Satara) 56, Vilholi (Nashik) 56, Kalwan (Nashik) and Talegaon (Pune) 52;
- ❖ **Marathwada:** Chh. Sambhaji Nagar 52, Ambejogai (Beed) 44, Parbhani 41;
- ❖ **Assam & Meghalaya:** Shillongani 50, Vcbc\_Rani 43, Umpanai 39, Down\_Town\_University 37, Silchar\_Jns\_College 37, Chirang 33, Umlapher 33, Mawsynram 52, Mawkyrwat 43, Jowai 41;
- ❖ **West Uttar Pradesh:** Agra 46;
- ❖ **East Madhya Pradesh:** Jabalpur 46;
- ❖ **Andaman & Nicobar Islands:** Swaraj Dweep 44; Sri Vijayapuram 43; Mayabunder, Shaheed Deep 31;
- ❖ **Odisha:** Ranital 44; Jagatsinghpur 39;
- ❖ **Konkan:** Dapoli (Ratnagiri) 44, Palghar 43, Santacruz (Mumbai) 41;
- ❖ **West Madhya Pradesh:** Ujjain 44;
- ❖ **Bihar:** Agwanpur 41; Aurangabad 35; Madhepura, Sheikhpura 33; Sukhet 31; Bhojpur, Muzaffarpur, Arrabari, Araria, Banka, East Champaran 30;
- ❖ **Himachal Pradesh:** Bajaura 41;
- ❖ **Saurashtra & Kutch:** Veraval 41

Table-1								
7 Days Rainfall Forecast								
S.No.	Subdivision	5- Jul	6- Jul	7- Jul	8- Jul	9- Jul	10- Jul	11- Jul
		Day 1	Day 2	Day 3	Day 4	Day 5	Day 6	Day 7
1	ANDAMAN & NICOBAR ISLANDS	WFS	WFS	WFS	FWS	FWS	FWS	WFS
2	ARUNACHAL PRADESH	FWS	FWS	SCT	SCT	SCT	SCT	SCT
3	ASSAM & MEHGHALAYA	WFS	FWS	FWS	FWS	FWS	SCT	SCT
4	NAGALAND, MANIPUR, MIZORAM AND TRIPURA	WFS	FWS	FWS	SCT	SCT	SCT	SCT
5	SUB HIMALAYAN WEST BENGAL & SIKKIM	WFS	FWS	FWS	WFS	FWS	FWS	FWS
6	GANGETIC WEST BENGAL	WFS	WFS	WFS	FWS	FWS	SCT	SCT
7	ODISHA	WFS	WFS	FWS	FWS	SCT	ISOL	ISOL
8	JHARKHAND	WFS	WFS	FWS	FWS	SCT	SCT	SCT
9	BIHAR	SCT	SCT	SCT	SCT	SCT	SCT	SCT
10	EAST UTTAR PRADESH	SCT	FWS	FWS	FWS	FWS	FWS	SCT
11	WEST UTTAR PRADESH	SCT	FWS	FWS	FWS	FWS	FWS	SCT
12	UTTARAKHAND	FWS	WFS	WFS	FWS	FWS	FWS	FWS
13	HARYANA, CHANDIGARH & DELHI	SCT	WFS	WFS	FWS	FWS	FWS	FWS
14	PUNJAB	SCT	WFS	WFS	FWS	FWS	FWS	FWS
15	HIMACHAL PRADESH	WFS	WFS	WFS	WFS	WFS	FWS	FWS
16	JAMMU AND KASHMIR AND LADAKH	SCT	FWS	FWS	FWS	FWS	SCT	SCT
17	WEST RAJASTHAN	SCT	ISOL	ISOL	ISOL	ISOL	SCT	SCT
18	EAST RAJASTHAN	FWS	SCT	SCT	SCT	FWS	FWS	FWS
19	WEST MADHYA PRADESH	WFS	WFS	WFS	WFS	FWS	FWS	FWS
20	EAST MADHYA PRADESH	WFS	WFS	WFS	WFS	WFS	WFS	WFS
21	GUJRAT REGION	WFS	WFS	WFS	WFS	FWS	FWS	FWS
22	SAURASHTRA & KUTCH	WFS	WFS	WFS	FWS	FWS	FWS	FWS
23	KONKAN & GOA	WFS	WFS	WFS	WFS	WFS	WFS	WFS
24	MADHYA MAHARASHTRA	FWS	FWS	FWS	SCT	SCT	SCT	SCT
25	MARATHWADA	SCT	FWS	FWS	SCT	ISOL	ISOL	ISOL
26	VIDARBHA	FWS	WFS	WFS	WFS	FWS	FWS	SCT
27	CHHATTISGARH	WFS	WFS	WFS	WFS	FWS	FWS	FWS
28	COASTAL ANDHRA PRADESH	SCT	SCT	SCT	ISOL	ISOL	ISOL	ISOL
29	TELANGANA	SCT	SCT	SCT	SCT	SCT	SCT	SCT
30	RAYALASEEMA	ISOL	ISOL	ISOL	ISOL	ISOL	ISOL	ISOL
31	TAMILNADU & PUDUCHERRY	ISOL	ISOL	ISOL	ISOL	ISOL	ISOL	ISOL
32	COSTAL KARNATAKA	WFS	WFS	WFS	WFS	WFS	WFS	WFS
33	NORTH INTERIOR KARNATAKA	FWS	FWS	SCT	SCT	FWS	FWS	SCT
34	SOUTH INTERIOR KARNATAKA	FWS	FWS	SCT	SCT	SCT	SCT	SCT
35	KERALA AND MAHE	WFS	WFS	FWS	FWS	WFS	WFS	WFS
36	LAKSHADWEEP	FWS	FWS	SCT	SCT	FWS	FWS	FWS

- As the lead period increases forecast accuracy decreases.







- Action may be taken based on ORANGE AND REDCOLOUR warnings.
- Vulnerable regions likely urban and hilly areas action may be initiated for heavy rainfall warning.
- As the lead period increases forecast accuracy decreases.

Detailed districtwise Multi Hazard weather warning for next five days available at <https://mausam.imd.gov.in/responsive/districtWiseWarningGIS.php>

## Weather forecast over Delhi/NCR during 05<sup>th</sup> to 08<sup>th</sup> July 2025

### Past Weather:

There has been no large change in the minimum and maximum temperatures over Delhi/NCR during the past 24 hours. The maximum and minimum temperatures over Delhi were around 35 to 37 °C and 27 to 28 °C, respectively. The minimum temperatures were nearly normal, and the maximum temperatures were below normal by 1 to 3 °C. Partly cloudy sky conditions with predominant surface wind from the southeast direction, with wind speeds up to 19 kmph, prevailed during the past 24 hours. Partly cloudy sky conditions with a windspeed of less than 6 kmph from the east-southeast direction prevailed over the region in the forenoon today.

### Weather Forecast:

**05.07.2025:** Generally cloudy sky. Light to Moderate rain accompanied by thunderstorms/lightning. The maximum temperatures over Delhi are likely to be in the range of 36 to 38°C. The maximum temperature will be near normal. The predominant surface wind will likely be from the southeast direction with a wind speed of less than 12 kmph in the afternoon. The wind speed will gradually increase, becoming 15-18 kmph from the east-southeast direction during evening and night.

**06.07.2025:** Generally cloudy sky. Light to moderate rain accompanied by thunderstorms/lightning. The maximum and minimum temperatures over Delhi are likely to be in the range of 34 to 36°C and 26 to 28°C, respectively. The minimum temperature will be near normal, and the maximum temperature will be below normal by up to 1 to 2°C. The predominant surface wind will likely be from the northwest direction with a wind speed of less than 15 kmph during the morning hours. The wind speed will gradually decrease, becoming less than 10 kmph from the south direction in the afternoon. It will increase to less than 15 kmph from the west direction during the evening and night.

**07.07.2025:** Generally cloudy sky. Light to moderate rain accompanied by thunderstorms/lightning. The maximum and minimum temperatures over Delhi are likely to be in the range of 32 to 34°C and 24 to 26°C, respectively. The minimum temperature will be below normal up to 1 to 2°C, and the maximum temperature will be below normal up to 2 to 4°C. The predominant surface wind will likely be from the northwest direction with a wind speed of less than 15 kmph during the morning hours. The wind speed will gradually decrease, becoming less than 10 kmph from the west direction in the afternoon. It will increase to less than 12 kmph from the southwest direction during the evening and night.

**08.07.2025:** Generally cloudy sky. Very light to light rain accompanied by thunderstorms/lightning. The maximum and minimum temperatures over Delhi are likely to be in the range of 32 to 34°C and 24 to 26°C, respectively. The minimum temperature will be below normal up to 1 to 2 °C, and the maximum temperature will be below normal up to 2 to 4°C. The predominant surface wind will likely be from the southeast direction with a wind speed of less than 15 kmph during the morning hours. The wind speed will gradually increase, becoming less than 10 kmph from the southwest direction in the afternoon. It will decrease to less than 10 kmph from the southeast direction during the evening and night.

### Impact expected and Action Suggested due to thunderstorm with lightning/gusty winds:

- Be cautious and take precautionary measures, though there is the likelihood of thunderstorm/lightning and gusty winds (speed 40 – 50 kmph) temporarily reaching 60 kmph during thunderstorm with dust rising surface winds.
- Breaking of tree branches, uprooting of large avenue trees, Large dead limbs blown from trees, Damage to standing crops, Minor to major damage to power and communication lines due to breaking of branches, Partial damage to vulnerable structures due to strong winds, Loose objects may fly.
- People are advised to keep a watch on the weather for worsening conditions and be ready to move to safer places accordingly, stay indoors, close windows & doors and avoid travel if possible, take safe shelters; do not take shelter under trees, do not lie on concrete floors and do not lean against concrete walls, unplug electrical/ electronic appliances, immediately get out of water bodies, keep away from all the objects that conduct electricity.

### Impact & Action Suggested

- ✓ **Extremely heavy rainfall (≥21 cm)** very likely at isolated places over East Madhya Pradesh on 05<sup>th</sup>; Ghat areas of Madhya Maharashtra on 06<sup>th</sup> & 07<sup>th</sup> and Himachal Pradesh on 06<sup>th</sup> July.
- ✓ **Heavy to very heavy rainfall** very likely to continue over Madhya Pradesh during 05<sup>th</sup>-11<sup>th</sup>; Konkan & Goa, ghat areas of Madhya Maharashtra during 05<sup>th</sup>-08<sup>th</sup>; Himachal Pradesh on 07<sup>th</sup> & 08<sup>th</sup>; Uttarakhand, Chhattisgarh, Gujarat region during 05<sup>th</sup>-07<sup>th</sup>; Punjab, Haryana on 06<sup>th</sup> & 07<sup>th</sup>; East Rajasthan on 05<sup>th</sup>, 09<sup>th</sup> & 10<sup>th</sup>; Vidarbha on 07<sup>th</sup> & 08<sup>th</sup>; Gangetic West Bengal, Jharkhand, Odisha, Saurashtra on 05<sup>th</sup> & 06<sup>th</sup> July.

#### Impact Expected

- Localized Flooding of roads, water logging in low lying areas and closure of underpasses mainly in urban areas of the above region.
- Occasional reduction in visibility due to heavy rainfall.
- Disruption of traffic in major cities due to water logging in roads leading to increased travel time.
- Minor damage to kutcha roads.
- Possibilities of damage to vulnerable structure.
- Localized Landslides/Mudslides/landslips/mudslips/landsinks/mudsinks.
- Damage to horticulture and standing crops in some areas due to inundation.
- It may lead to riverine flooding in some river catchments (for riverine flooding please visit Web page of CWC)

#### Action Suggested

- Check for traffic congestion on your route before leaving for your destination.
- Follow any traffic advisories that are issued in this regard.
- Avoid going to areas that face the water logging problems often.
- Avoid staying in vulnerable structure.

#### Agromet advisories for likely impact of Heavy / Heavy to Very Heavy / Extremely Heavy Rainfall

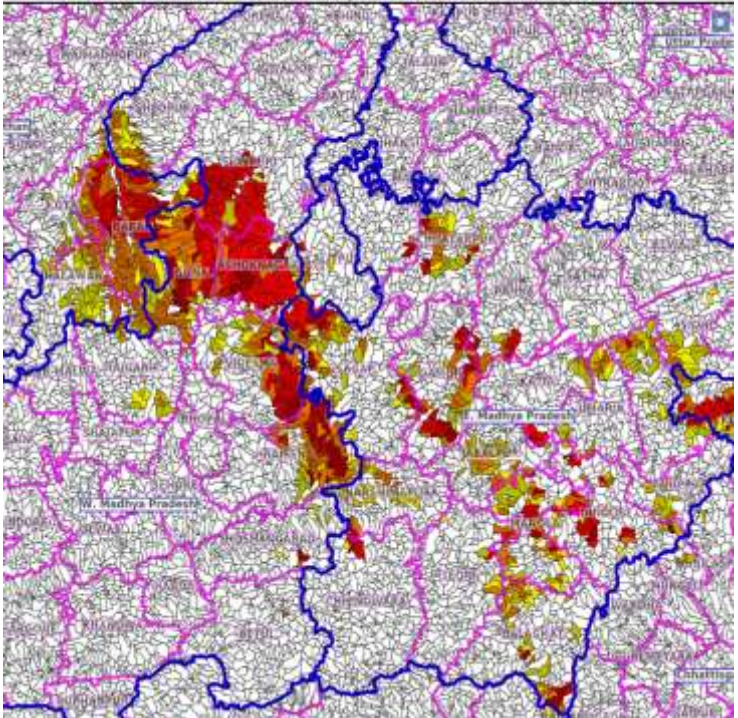
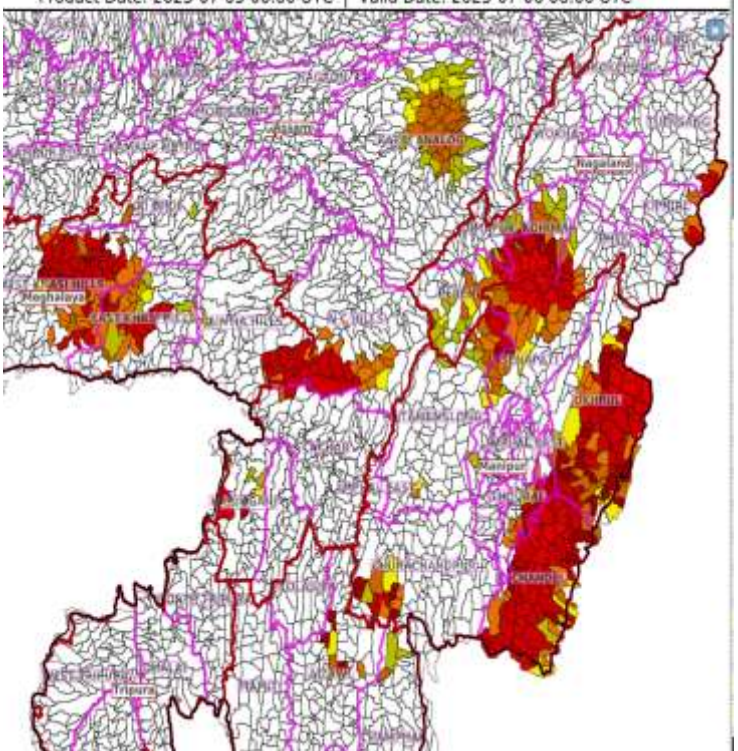
- In **West Madhya Pradesh**, postpone the sowing of soybean and wait until the cessation of rainfall before resowing soybean and pearl millet that have been damaged due to rainfall in the Grid Zone. In **East Madhya Pradesh**, postpone sowing of maize, soybean and transplanting of rice. Drain out excess water from already sown maize, soybean, rice nurseries and transplanted rice.
- In **Chhattisgarh**, ensure proper drainage in rice nurseries, fields of maize, minor millets and vegetables.
- In **Konkan**, make arrangement to drain out excess water from rice and finger millet nurseries, groundnut, vegetables and orchards. In **ghat areas of Madhya Maharashtra** make arrangement to drain out excess water from rice and finger millet nurseries.
- In **Coastal Karnataka**, ensure proper drainage in already sown rice nurseries and remove excess rainwater to prevent water stagnation. Provide drainage to remove the excess water from the maize fields, arecanut, coconut and banana. Provide staking to avoid lodging of Banana plant. In **South Interior Karnataka**, make arrangements to drain out excess water in vegetables to avoid waterlogging.
- In **Himachal Pradesh** - make proper drainage channels in the fields of vegetables and maize. In **High Hills Sub Temperate Wet Zone**, postpone sowing of kidney beans. Provide proper drainage in finger millets, maize, kidney beans, vegetables and fruit orchards. Harvest the mature fruits and vegetables and store them in safer places.
- In **Uttarakhand**, ensure proper drainage facilities in soybean, maize, barnyard millet, finger millet, pigeon pea, kidney beans, vegetables and orchards. Harvest matured vegetables and fruits and store in safe place.
- In **East Rajasthan**, harvest the matured vegetables such as okra and cucurbits and store them in safe places. Make arrangements for draining out excess water from the fields of groundnut and green gram.
- In **Gujarat**, make necessary arrangements to drain out excess water in rice nurseries, sugarcane fields, banana and mango plantations to prevent waterlogging. Provide support to sugarcane with strong bamboo or tie the leaves together to prevent lodging. Postpone transplanting of rice seedlings in *South Gujarat Heavy Rainfall Zone*. In **Saurashtra & Kutch**, drain out excess rain water from groundnut, soybean, cotton, vegetable nurseries/fields and horticultural plantations. Undertake propping in sugarcane with strong bamboo or tie the leaves together in a clump to protect against wind and heavy rain.
- In **Odisha**, ensure proper drainage from already sown rice nurseries, fields of maize and vegetables to prevent waterlogging. Harvest matured vegetables and fruits and keep in safer places.
- In **Jharkhand**, make necessary arrangements to drain out excess water from already sown maize fields, rice and vegetable nurseries. Cover the vegetable nurseries with polythene sheets.
- In **Gangetic West Bengal**, ensure proper drainage from rice, jute and vegetable field. Harvest matured sesame and groundnut crop immediately and keep in safer places in *New Alluvial Zone*.
- In **Arunachal Pradesh**, harvest matured soybean and vegetables during clear weather and shift the harvested produce to safer places. Postpone fresh transplantation of rice in lowland areas. Ensure proper drainage in rice, soybean, vegetable fields and orchards.
- In **Meghalaya** - Avoid nursery sowing/transplanting of rice during heavy rainfall. Maintain proper drainage around nursery bed. Avoid water stagnation near cucurbits (pumpkin/bottle gourd/ ash gourd/squash/cucumber/bitter gourd) plant bases to prevent collar rot and other root diseases

#### Livestock / Fishery

- Keep the animals inside the shed during heavy rainfall and provide them balanced feed.
- Store feed and fodder in a safe place to prevent spoilage.
- Construct an outlet with proper netting around the ponds to drain out excess water, thereby preventing fish from escaping in case of overflow.



## Flash flood guidance:

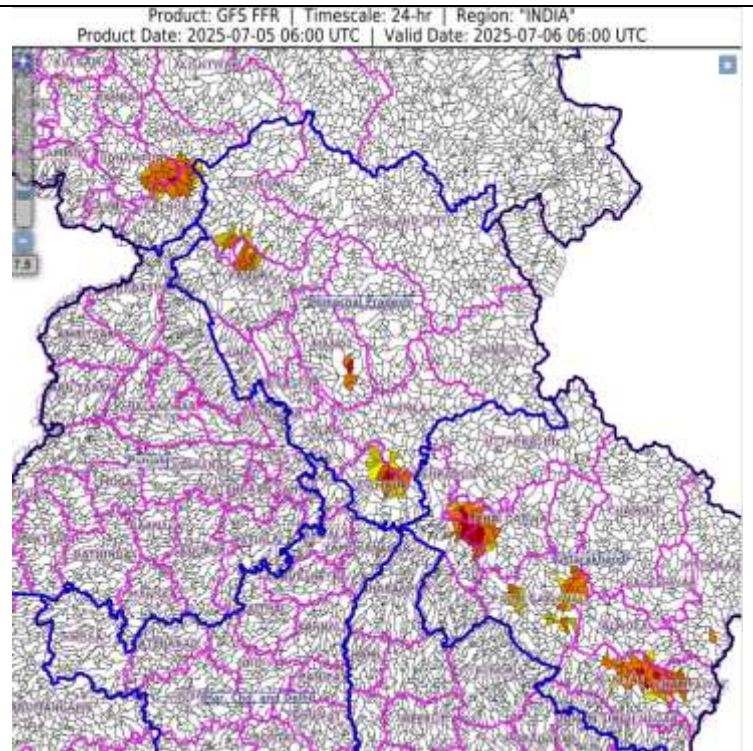
<p>24 hours Outlook for the Flash Flood Risk (FFR) till 1130 IST of 06-07-2025 : Moderate flash flood risk likely over few watersheds &amp; neighbourhoods of following Met Sub-divisions during next 24 hours.</p> <p>East Rajasthan - Baran, Jhalawar and Kota districts. East Madhya Pradesh - Anuppur, Balaghat, Chhatarpur, Chhindwara, Damoh, Dindori, Jabalpur, Katni, Mandla, Narshimpur, Panna, Rewa, Sagar, Seoni, Shahdol, Sidhi, Singrauli, Tikamgarh and Umaria districts. West Madhya Pradesh - Ashoknagar, Guna, Raisen, Rajgarh, Sheopur, Shivpuri and Videsha districts.</p> <p>Surface runoff/ Inundation may occur at some fully saturated soils &amp; low-lying areas over Area of Concern (AoC) as shown in map due to expected rainfall occurrence in next 24 hours.</p>	<p>Product: WRF FFR   Timescale: 24-hr   Region: "REGIONAL" Product Date: 2025-07-05 06:00 UTC   Valid Date: 2025-07-06 06:00 UTC</p> 
<p>24 hours Outlook for the Flash Flood Risk (FFR) till 1130 IST of 06-07-2025 :</p> <p>Low to Moderate flash flood risk likely over few watersheds &amp; neighbourhoods of following Met Sub-divisions during next 24 hours.</p> <p>Assam &amp; Meghalaya - Cachar, Karbi Analog, N.C Hills, Karimganj, East Khasi Hills, West Khasi Hills and Jaintia Hills districts.</p> <p>Nagaland Mizoram Manipur Tripura ( NMMT) Nagaland – Dimapur, Kiphire, Kohima, Peren, Phek, Tuensang. Mizoram–Aizawl Manipur – Chandel, Churachandpur, Imphal East, Senapati, Tamenglong, Thoubal, Ukhrul district</p> <p>Surface runoff/ Inundation may occur at some fully saturated soils &amp; low-lying areas over Area of Concern (AoC) as shown in map due to expected rainfall occurrence in next 24 hours.</p>	<p>Product: GFS FFR   Timescale: 24-hr   Region: "INDIA" Product Date: 2025-07-05 06:00 UTC   Valid Date: 2025-07-06 06:00 UTC</p> 

24 hours Outlook for the Flash Flood Risk (FFR) till 1130 IST of 06-07-2025 :

Low to Moderate flash flood risk likely over few watersheds & neighbourhoods of following Met Sub-divisions during next 24 hours.

Himachal Pradesh - Chamba, Kangra, Mandi, Shimla and Sirmaur districts.  
Jammu & Kashmir & Ladakh - Doda, Kathua and Udhampur districts.  
Uttarakhand - Champawat, Dehradun, Nanital, Pauri Garhwal, Pithoragarh and Tehri Garwal districts.

Surface runoff/ Inundation may occur at some fully saturated soils & low-lying areas over Area of Concern (AoC) as shown in map due to expected rainfall occurrence in next 24 hours.



### Legends & abbreviations:

- ❖ **Heavy Rain:**64.5-115.5mm; **Very Heavy Rain:**115.6-204.4mm; **Extremely Heavy Rain:** >204.4mm.
- ❖ **Obsy:** Observatory; Automatic Weather Station; **ARG:** Automatic Rain Gauge; **dist:** District; **NH:** National Highway; **KVK:** Krishi Vigyan Kendra; **DVC:** Damodar Valley Corporation; **PTO:** Part Time Office, **Aero:** Aerodrome, **IAF:** Indian Air Force.
- ❖ **Region wise classification of meteorological Sub-Divisions:**
  - **Northwest India:** Western Himalayan Region (Jammu-Kashmir-Ladakh-Gilgit-Baltistan-Muzaffarabad, Himachal Pradesh and Uttarakhand); Punjab, Haryana-Chandigarh-Delhi; West Uttar Pradesh, East Uttar Pradesh, West Rajasthan and East Rajasthan.
  - **Central India:** West Madhya Pradesh, East Madhya Pradesh, Vidarbha and Chhattisgarh.
  - **East India:** Bihar, Jharkhand, Sub-Himalayan West Bengal & Sikkim; Gangetic West Bengal, Odisha and Andaman & Nicobar Islands.
  - **Northeast India:** Arunachal Pradesh, Assam & Meghalaya and Nagaland, Manipur, Mizoram & Tripura.
  - **West India:** Gujarat Region, Saurashtra & Kutch, Konkan & Goa, Madhya Maharashtra and Marathawada.
  - **South India:** Coastal Andhra Pradesh & Yanam, Telangana, Rayalaseema, Coastal Karnataka, North Interior Karnataka, South Interior Karnataka, Kerala & Mahe, Tamil Nadu, Puducherry & Karaikal and Lakshadweep.



## LEGENDS

1. अंडमान और निकोबार द्वीपसमूह

2. अरुणाचल प्रदेश

3. असम और मेघालय

4. नागालैंड, मणिपुर, मिजोरम और त्रिपुरा

5. उप-हिमालयी पश्चिम बंगाल और सिक्किम

6. गंगीय पश्चिम बंगाल

7. ओडिशा

8. झारखंड

9. बिहार

10. पूर्वी उत्तर प्रदेश

11. पश्चिम उत्तर प्रदेश

12. उत्तराखंड

13. हरियाणा, चंडीगढ़ और दिल्ली

14. पंजाब

15. हिमाचल प्रदेश

16. जम्मू और कश्मीर और लद्दाख

17. पश्चिम राजस्थान

18. पूर्वी राजस्थान

19. पश्चिम मध्य प्रदेश

20. पूर्वी मध्य प्रदेश

21. गुजरात

22. सौराष्ट्र

23. कोंकण और गोवा

24. मध्य महाराष्ट्र

25. मराठवाड़ा

26. विदर्भ

27. छत्तीसगढ़

28. तटीय आंध्र प्रदेश और यनम

29. तेलंगाना

30. रायलसीमा

31. तमिलनाडु, पुडुचेरी और कराईकल

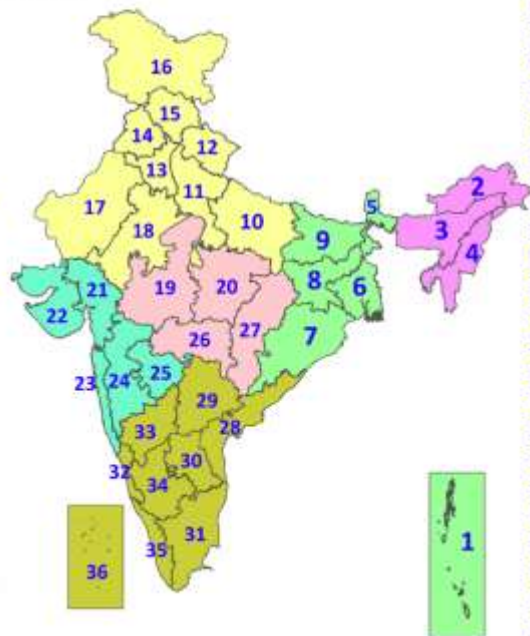
32. तटीय कर्नाटक

33. आंतरिक उत्तरी कर्नाटक

34. आंतरिक दक्षिणी कर्नाटक

35. केरल और माहे

36. लक्षद्वीप



1. Andaman & Nicobar Islands

2. Arunachal Pradesh

3. Assam & Meghalaya

4. Nagaland, Manipur, Mizoram & Tripura

5. Sub-Himalayan West Bengal & Sikkim

6. Gangetic West Bengal

7. Odisha

8. Jharkhand

9. Bihar

10. East Uttar Pradesh

11. West Uttar Pradesh

12. Uttarakhand

13. Haryana, Chandigarh & Delhi

14. Punjab

15. Himachal Pradesh

16. Jammu & Kashmir and Ladakh

17. West Rajasthan

18. East Rajasthan

19. West Madhya Pradesh

20. East Madhya Pradesh

21. Gujarat

22. Saurashtra

23. Konkan & Goa

24. Madhya Maharashtra

25. Marathwada

26. Vidarbha

27. Chhattisgarh

28. Coastal Andhra Pradesh & Yanam

29. Telangana

30. Rayalaseema

31. Tamilnadu, Puducherry & Karaikal

32. Coastal Karnataka

33. North Interior Karnataka

34. South Interior Karnataka

35. Kerala & Mahe

36. Lakshadweep

## SPATIAL DISTRIBUTION (% of Stations reporting)

% Stations	Category	% Stations	Category
76-100	Widespread (WS/Most Places)	26-50	Scattered (SCT/A Few Places)
51-75	Fairly Widespread (FWS/Many Places)	1-25	Isolated (ISOL)



Fog



Heavy Snow



Cold Wave



Heavy Rain



Dust Storm



Cold Day



Very Heavy Rain



Heat Wave



Ground Frost



Extremely Heavy Rain



Warm Night



Thunder & Lightning



Hot Day



Hailstorm



Hot & Humid



Dust Raising Winds



Strong Surface Winds

### COLOUR CODED WARNING

No Warning (No Action)

Watch (Be Aware)

Alert (Be Prepared To Take Action)

Warning (Take Action)

### Probabilistic Forecast

Terms	Probability of Occurrence (%)
Unlikely	< 25
Likely	25 - 50
Very Likely	50 - 75
Most Likely	> 75

\* Red colour warning does not mean "Red Alert", Red colour warning means "Take Action".

Forecast and Warning for any day is valid from 0830 hours IST of day till 0830 hours IST of next day.

For more details, kindly visit <https://mausam.imd.gov.in> or contact: 011-2434-4599

(Service to the Nation since 1875)

### DEFINITION/CRITERIA

#### Rain/ Snow \*

Heavy: 64.5 to 115.5 mm/cm \*  
Very Heavy: 115.6 to 204.4 mm/cm \*  
Extremely Heavy: > 204.4 mm/cm \*

#### Heat Wave

When maximum temperature of a station reaches  $\geq 40^{\circ}\text{C}$  for plains and  $\geq 30^{\circ}\text{C}$  for hilly regions

(a) Based on Departure from normal

Heat Wave: Maximum Temperature Departure from normal  $4.5^{\circ}\text{C}$  to  $6.4^{\circ}\text{C}$ .

Severe Heat Wave: Maximum Temperature Departure from normal  $\geq 6.5^{\circ}\text{C}$

(b). Based on Actual maximum temperature

Heat Wave: When actual maximum temperature  $\geq 45^{\circ}\text{C}$ .

Severe Heat Wave: When actual maximum temperature  $\geq 47^{\circ}\text{C}$ .

(c). Criteria for heat wave for coastal stations

When maximum temperature departure is  $> 4.5^{\circ}\text{C}$  from normal. Heat Wave may be described provided maximum temperature  $\geq 37^{\circ}\text{C}$ .

#### Warm Night

When maximum temperature remains  $40^{\circ}\text{C}$

Warm Night: When minimum temperature departure  $4.5^{\circ}\text{C}$  to  $6.4^{\circ}\text{C}$ .

Severe Warm Night: When minimum temperature departure  $> 6.4^{\circ}\text{C}$ .

#### Cold Wave

When minimum temperature of a station  $\leq 10^{\circ}\text{C}$  for plains and  $\leq 0^{\circ}\text{C}$  for hilly regions.

(a). Based on departure

Cold Wave: Minimum Temperature Departure from normal  $-4.5^{\circ}\text{C}$  to  $-6.4^{\circ}\text{C}$ .

Severe Cold Wave: Minimum Temperature Departure from normal  $\leq -6.5^{\circ}\text{C}$

(b) Based on actual Minimum Temperature (for Plains only)

Cold Wave: When Minimum Temperature is  $\leq 4.0^{\circ}\text{C}$

Severe Cold Wave: When Minimum Temperature is  $\leq 2.0^{\circ}\text{C}$

(c) For Coastal Stations

When Minimum Temperature departure is  $\leq -4.5^{\circ}\text{C}$  & actual Minimum Temperature is  $\leq 15^{\circ}\text{C}$

#### Cold Day

When minimum temperature of a station  $\leq 10^{\circ}\text{C}$  for plains and  $\leq 0^{\circ}\text{C}$  for hilly regions

Based on departure

Cold Day: Maximum Temperature Departure from normal  $-4.5^{\circ}\text{C}$  to  $-6.4^{\circ}\text{C}$ .

Severe Cold Day: Maximum Temperature Departure from normal  $\leq -6.5^{\circ}\text{C}$

#### Fog

Phenomenon of small droplets suspended in air and the horizontal visibility  $< 1\text{km}$

Moderate Fog: When the visibility between 500-200 metres

Dense Fog: when the visibility between 50- 200 metres

Very Dense Fog: when the visibility  $< 50$  metres

#### Thunderstorm

Sudden electrical discharges manifested by a flash of light (Lightning) and a sharp rumbling sound (thunder)

#### Dust/Sand Storm

An ensemble of particles of dust or sand energetically lifted to great heights by a strong and turbulent wind.

#### Frost

Ice deposits on ground

Air temperature  $\leq 4^{\circ}\text{C}$  ( over Plains)

#### Squall

A strong wind that rises suddenly, lasts for atleast 1 minute.

Moderate: Wind speed 52-61 kmph

Severe: Wind speed 62-67 kmph

Very Severe: Wind speed  $> 67$  kmph

#### Sea State

Effect of various waves in the sea over specific area

Rough to very rough: Wind speed 41-62 kmph (22-33 knots) & Wave height 2.5-6 metre

High to very high: Wind speed 63-117 kmph ( 34-63 knots) & Wave height 6-14 metre

Phenomenal: Wind speed  $> 117$  kmph ( $> 63$  knots) & Wave height  $> 14$  metre

#### Cyclone

Cyclonic Storm: Wind speed 62-87 kmph (34-47 knots)

Severe Cyclonic Storm: Wind speed 88-117 kmph (48-63 knots)

Very Severe Cyclonic Storm: Wind speed 118-165 kmph (64 - 89 knots)

Extremely Severe Cyclonic Storm: Wind speed 166-220 kmph (90 -119 knots)

Super Cyclone Storm: Wind speed  $> 220$  kmph ( $> 119$  knots)

\* Red colour warning does not mean "Red Alert", Red colour warning means "Take Action".

Forecast and Warning for any day is valid from 0830 hours IST of day till 0830 hours IST of next day.

For more details, kindly visit <https://mausam.imd.gov.in> or contact: 011-2434-4599

(Service to the Nation since 1875)

**Hot and Humid:** When maximum temperatures remain  $3^{\circ}\text{C}$  above normal along with the above normal relative humidity.